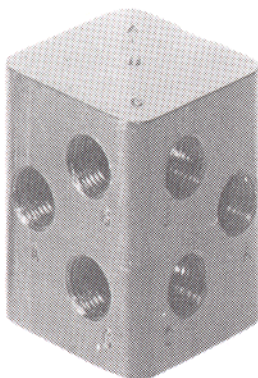
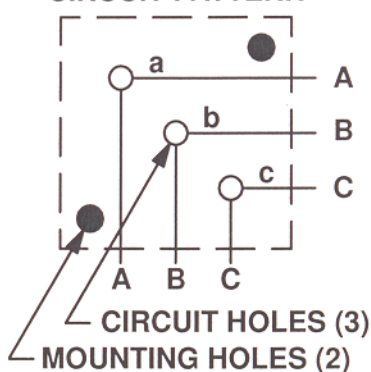


REVISED: 1-12-96
PN 58999-047
FORM: 4823



PIPE PORT 1/8-27 N.P.T.F.

CIRCUIT PATTERN



CIRCUIT SYMBOL

A	○	a
B	○	b
C	○	c



**READ THIS MANUAL CAREFULLY BEFORE INSTALLING,
OPERATING OR SERVICING THIS EQUIPMENT.**

GENERAL DESCRIPTION

The side porting block is used to make connections around the periphery of the circuit board. It provides three individual pipe tap connections on each of two sides. The pipe ports on the side that are not used must be plugged with Y227-2-K pipe plugs using a good grade pipe sealer. The porting block has three bottom ports which are marked on the top to correspond to their position on the base and also with pipe port mark-

ings on the sides. The bottom ports connect to the circuit board, and thru circuit passages in the circuit module, allow the required circuitry to be performed. Three 35926 seals provide sealing between the circuit base plate and the bottom ports of the porting block. Two Y154-33-S screws and two Y14-6-S washers are used to attach the porting block to the circuit board.

PARTS LIST

